



# McFarland Historical Society

5814 MAIN STREET MCFARLAND, WISCONSIN 53558 PH: 608-838-3992  
Issue NO. 41 Feb 15, 2010

## 2010 Annual Meeting of the McFarland Historical Society

Jim Leary to Speak March 14th, 2010, at 1 P.M. in the E.D. Locke Library

The 2010 Annual Meeting of the McFarland Historical Society will be held on Sunday, March 14th, 2010, at 1 P.M. in the E.D. Locke Library. Our Annual Meeting is open to all and a program is planned each year. Our program this year will be provided by Jim Leary from the University of Wisconsin-Madison. Jim Leary is professor of folklore and Scandinavian studies at the University of Wisconsin, where he also co-founded the Center for the Study of Upper Midwestern Cultures, an organization devoted to the languages and folklore of the region's diverse peoples (<http://csumc.wisc.edu>). His many publications include: Wisconsin Folklore (1998), So Ole Says to Lena: Folk Humor of the Upper Midwest (2001), and Polkabilly: How the Goose Island Ramblers Redefined American Folk Music (2006). Leary's current projects include working with a team of graduate students on an on-line archive of Norwegian American folk music, and producing a multi-CD/book package, Folksongs of the Other America: Field Recordings from the Upper Midwest, 1937-1946.

Leary's talk, "Norwegian Folk Music in Wisconsin: Field Recordings from the 1940s," will draw on the work of Helene Stratman-Thomas, a UW professor of music, who traveled throughout the state on behalf of the American Folklife Center at the Library of Congress. Using a bulky disk-cutting recorder, she captured the folk artistry of singers and instrumentalists from more than 25 ethnic groups. Leary will comment on and play newly restored examples of representative Norwegian selections, including a tune on Hardanger fiddle, an Old World cow call, an immigrant ballad, a patriotic anthem, and the remarkable sounds of McFarland's own Psalmodikon Quartet.

## Early Automobiles is the New Lobby Theme

The new theme for the 2010 museum lobby is all about the "horseless carriage." At this time we're not sure when the first automobile putted through the unpaved streets of McFarland but the earliest photo we have was taken in 1909. We're hoping to get some help in expanding the historical record of this important change in village life with the coming of the automobile.

But we need your help. For lobby display, we're looking for photographs of old cars and trucks that date from the 1950's way back to the beginning of the century. We're also looking for stories that we can share about the early automobiles and the early roads in the area. Any kind of advertising and magazines that reflect the prices and innovations of the various models of automobiles can be part of the story. Tools and other automobile momentos, including toys, are needed for our exhibit.

Of special interest we're hoping to showcase many restored early automobiles on some of our Open House Sundays throughout the summer. Please contact Wes Licht (838-8178) or one of the other board members. Help us to preserve the historical record of the early automobile days in our community.



*The changing of the times -  
a Buick on Main Street  
on the 4<sup>th</sup> of July in 1909.*



## Third Graders Visit the Museum

by Dale Marsden

We enjoyed showing the third grade classes from Waubesa Intermediate School through the McFarland Historical Museum as a part of their study of McFarland. In October seven classes of third graders were introduced to the 2009 theme display, "From Horse Power to Horsepower," showing the changes made to our lives when we started using machines to replace horses. Steam engines, gas-powered tractors and gas and electric-powered motors replaced the power horses provided on the farm and on the road.

Divided into smaller groups, the third graders were given a tour of the log cabin and the permanent museum exhibits. Board members Wes Licht, Mary Dahlstrom, Gini Nichols, Ginny Dodson, Dale Marsden and Crystal Lokken acted as tour guides, pointing out selected items in the many displays.

Out in the Skare log cabin on the museum grounds, Wes Licht showed the students what life in a log cabin was like. The students were amazed that nine Skare children were born and raised in the cabin.

When the museum is open on Sunday afternoons in the summer, some of the third graders return with their parents and siblings to visit at a more leisurely pace. They enjoy showing their families their favorite displays.

*The store manikin seemed to grab the attention of this group of third graders as they scanned the shelves for familiar products.*



## Historic McFarland Tour

The trolley car tour of historic McFarland during the Family Festival in early October began at the railroad tracks on Main Street and was led by McFarland Historical Society board member Crystal Lokken.

"This is an important starting point because it was the railroad and the new depot, built by William McFarland in 1856, that started the village. We're heading north since the early development of McFarland occurred north of

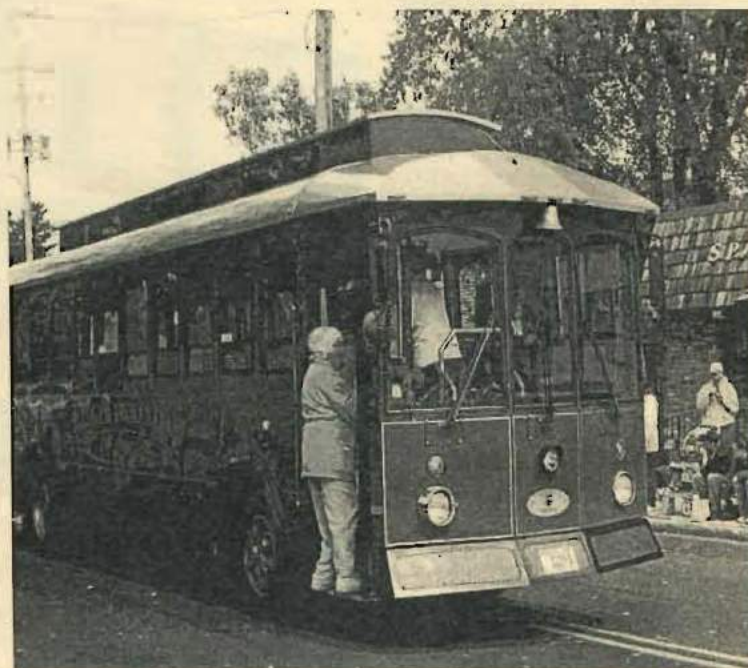
the railroad tracks. First there is the landmark McFarland House in 1857, now the McFarland House Cafe which has revitalized a piece of the old village center. Next comes the historic cream-brick buildings - the tavern, the antique shop, and the dentist office. On up Main and Hough Streets we see three of the oldest homes remaining in the village, built in 1861, 1864 and 1865. We continue north on Main Street past Brodhead to homes that were once farm houses. One was built in 1880 by Ole Olson where his three children lived. Benny was the farmer, Marie worked in the bank, and Hannah took care of the house. Then there's the grand Eighth home built in 1896. Following Main Street to Marsh Road, our trolley passes Christ the King Catholic Church, started in 1959 as a mission church of the Madison diocese.

Our tour now heads south on Marsh Road, passing the McFarland Lutheran Church. It was organized in 1867 by the many Norwegians who lived in the village and on farms in the area. Stopping at the corner we can see the old parsonage, now the Parsonage B and B. It was built in 1900 for about \$2000 and stands out as another of McFarland's grand homes from that era. Further east on Brodhead Street are the United Church of Christ and the Holscher farm house near the top of the hill.

Now our route turns down Milwaukee Street, originally the eastern border of the village, and past more historic homes. We travel beyond the municipal building and the fire department to the lumber yard, which has been in the same location near the tracks since 1856. It played an important part in the building of the village."

The narration above is a condensed version of the first half of Crystal's tour. At the end of one of the three half-hour tours someone asked, "Is this written down?" This has inspired the society board to publish a self-guided tour as well as a DVD of historic McFarland. Watch for them!

*Tour guide Crystal Lokken climbs aboard the trolley.*





## A Very Special House Gets a Second Chance



*This shows the Larson House in its early days - notice the windmill for bringing up water from the backyard well and the railroad materials along the tracks.*

The McFarland Historical Society board has taken decisive action to purchase one of the most beautiful early homes in the village. We see the attractive Queen-Anne style house as we stop at the intersection at Farwell and Exchange Streets. It stands out as a grand example of turn-of-the-century architecture in McFarland. The house has stood empty for many years and has certainly caught our attention because of its neglected appearance. It is the intention of the Historical Society to preserve this property that has a special place in McFarland history.

This landmark structure, known as the Larson House, has a venerable history. It was built for E. N. Edwards in 1898. The second owner was Tollef Olson Foshein. After residing there for about 10 years, Tollef sold it to John Larson in 1911 and it has been in his family ever since. Bertha Larson was the last member of the Larson family to live in the house which became vacant when she died in 1988. Bertha's younger sister, Norma Larson Hoenecke, then inherited the house, followed by Norma's son, Roy Hoenecke. This means the house has been in the Larson-Hoenecke family for almost one hundred years.

The McFarland Historical Society intends to preserve this early home as a house museum. Because of its beauty and location, it will serve as a memorial to the pioneering spirit of early McFarland settlers, including the Larson family, which settled here as early as 1862. The house will

portray life in the early 20<sup>th</sup> century, approximating the era of the 1920's, with period decor, historical photos, art work and a variety of exhibits all available for public open house activities and viewing. Many towns and villages in Wisconsin have such house museums.

Restoration of the Larson house will take place after detailed planning. The house retains the original light fixtures, put in just after the coming of electricity, as well as many other historical features. Members of the Larson family have been invited to provide photographs to help with the planning. A few items of furniture remain in the house, but additional furniture from the turn-of-the-century, other period furnishings and clothing will be needed to bring the house to life. A community-wide fundraising drive has begun to help with the purchase of the house and grants are being written to assist with its restoration.

The McFarland Historical Society is grateful to Rev. Roy Hoenecke for his willingness to sell his family home. As a house museum, the Larson House will be a wonderful addition to McFarland's historic downtown. It is anticipated that it will be a candidate for designation to both the State and National Registers of Historic Places.

The annual meeting of the McFarland Historical Society will be held in the Community Room of the E.D. Locke Library on Sunday, March 14, at 1 pm. Expect to hear more about this important historic preservation project at that time!

### An Invitation To Participate

The McFarland Historical Society board is actively involved in the first of two phases of the fund-raising program for the Larson House. **Phase one involves efforts to raise \$150,000 by April 1 toward the purchase of the property.** Phase two will follow detailed plans for renovation and restoration. Board members are seeking participation by businesses and area citizens in both phases of this special community project. Donations should be sent to: **The McFarland Historical Society at Box 94, McFarland, WI 53558,** and earmarked for the Larson House. **All donations for the Larson House are tax deductible.** Gifts of \$1,000 or more will receive name recognition in the house museum.

Contact our fundraising chairperson, Ken Brost at 838-7142, or for more information, please contact Dale Marsden at 838-3992.

Your support is greatly appreciated.



## Recent Deaths

Stanley Ivan Dodson, age 65

COTTAGE GROVE - Stanley passed away on Sunday, Aug. 23, 2009. Stanley was born in Lincoln, Ill., on July 26, 1944, to Ivan Frank Dodson and Dorothy Wanda Dodson. He spent his early childhood in Southern Illinois, living in Mount Pulaski, Anna, and Albion. When Stanley was 10, his father moved the family to western Colorado to prospect for uranium.

Stanley graduated from Grand Junction High School in 1962. He attended Yale University and graduated with a B.A. in Science in 1966. While at Yale University, Stanley met the love of his life, Virginia Elizabeth Joseph, who became his wife on January 16, 1967. Stanley received his Doctorate in Zoology in 1970 from the University of Washington. After graduation, Stanley and his family moved to Wisconsin and Stanley became an Assistant Professor of Zoology. Stanley was a Professor of Zoology at the University of Wisconsin from 1970 until his retirement in 2008.

His career encompassed nearly 40 years of research, teaching, mentoring, and public service. He was a respected scholar who made important contributions to the fields of aquatic ecology, community and population ecology, species interactions and community structure, environmental contaminants, and limnology. His intellectual legacy lives on in the many graduate students and post-doctoral fellows who studied with him. Stanley was a true naturalist, and loved to share his enthusiasm and knowledge with others. Stanley had many passions in life including: bicycling, tai chi and sensing hands, running, gardening, bird watching, and music.

He was a wonderful father, friend, teacher, and mentor. He will be deeply missed by many. Stanley is survived by his wife, Virginia Elizabeth Dodson; his daughter, Sarah Emily Dodson Wilson; his son-in-law, Ian David Sobaczewski Wilson and grandchildren.

Jeannette Arlene Bump, age 81

RANDOLPH - Jeannette died peacefully on Wednesday, Nov. 11, 2009, of natural causes at Columbia Health Care Center, Wyocena, Wis. Jeannette was born in McFarland on Feb. 16, 1928, the daughter of Joseph and Mary (Havey) McFarland. The youngest of seven children, she was the granddaughter of William Hugh McFarland, founder of the village of McFarland. She graduated with honors from Madison East High School in Madison. On Nov. 15, 1947, she married Joseph Bump. Jeannette is adored and greatly loved by her husband of 62 years. Jeannette and Joseph owned and operated New Bohlings, Inc. in Randolph for 50 years.

Jeannette is the dearly loved mother of seven children: Jeffrey (Nancy) Bump, Cambria; Jeannette Bump, Randolph; Joel Bump, Woodstock, Ga.; Jaclyn Meyer, Randolph; Jerome (Cheri) Bump, Ft. Atkinson; Jorey (Julie) Bump, Windmoor, Pa., and Joette (Brad) Bump, Appleton.

Jeannette is survived by her devoted husband Joseph, sister Dorothy Kolofski of Ft. Meyers, Fla.; children, grandchildren, great grandchildren. Jeannette was preceded in death by three brothers: Roy McFarland, Harvey McFarland, Milo McFarland; two sisters: Avenal Ditreich and Lillian Leuth; son-in-law Joe Meyer, and daughter-in-law Susan Bump.

Gordon Perry Freese, age 93

MADISON - Gordon died Nov. 29, 2009, at Oakwood Village Retirement Community in Madison. He was born in 1916, in Lakewood, Ohio, the son of Willard and Eugenie Prebble Freese, and grew up there, an only child. His undergraduate degree was from the University of Chicago, and he received his master's degree in public administration from the Maxwell Graduate School of Citizenship and Public Affairs of Syracuse University, Syracuse, N.Y., in 1941. During his study at Syracuse University, he married the late Elizabeth Ruth Hoag of Barrington, R.I., on Nov. 9, 1940.

He served in the U.S. Coast Guard during World War II. After the war he was assigned to the U.S. Office of Military Government under General Lucius D. Clay in Berlin, where his work focused on rehabilitation of the German economy. He and his family, which by that time included daughters, Lynne and Martha, were present in Berlin through the 11 months of the 1948/49 airlift, when the Soviet Union blocked land access to the city. In 1953 he left government work for a position as vice president of Stephens College in Columbia, Mo. After the death of his wife, Elizabeth, Gordon married the former Jean Bliss 1968. In 1992, Gordon was named McFarland Village's Volunteer Worker of the Year. He served as a trustee on McFarland's Village Board for many years, was a member of the Regional Plan Commission, on the Board of the McFarland Historical Society, and was a charter member of McFarland United Church of Christ, serving as its treasurer for 10 years. His lifelong preoccupation with social justice manifested itself in his volunteer work for Habitat for Humanity. His and Jean's years of service to this organization were honored when Habitat chose the name Freese Lane for one of the streets in their development, Twin Oaks, in Southeast Madison. He is survived by his wife, Jean of Madison; daughters, Lynne (Al) of San Luis Obispo, Calif., Martha (Brian) of Victoria, British Columbia, and Alison of Alexandria, Va.; and son, David (Niramon) of Victoria, British Columbia.



## The Log Cabin Gets a New Roof

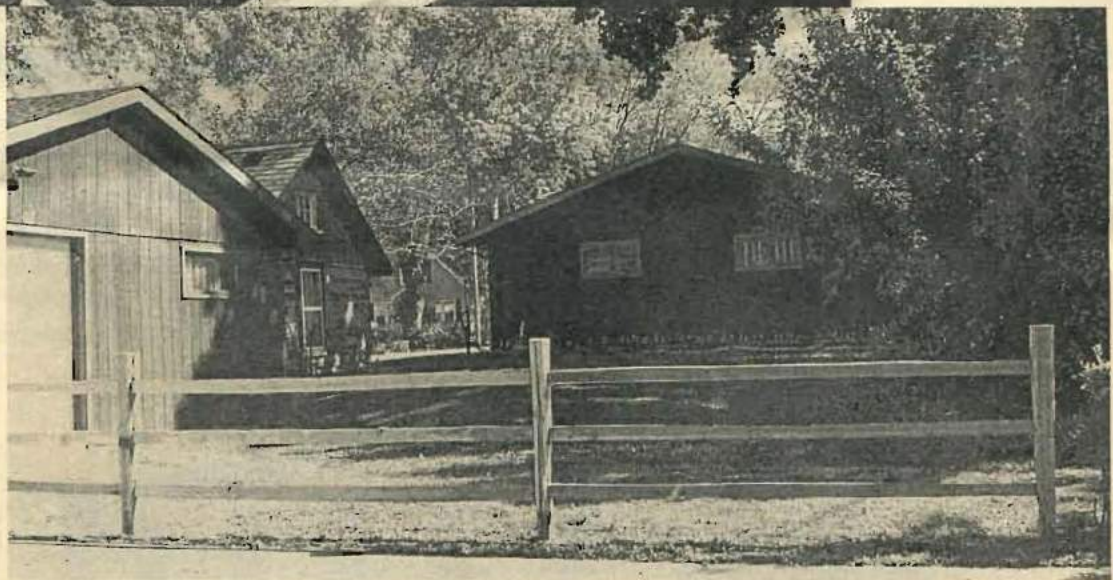
It was hot and sunny, but the old roof came off and a new cedar shake roof was nailed on. The new roof should keep out the rain for 40 to 50 years. Roof vents were also added to keep the cabin a little cooler in the summer.



Teamwork on replacing the old shake roof of the log cabin - Wes Licht near peak, Ed Wimmer along edge and Stanley Dodson in front. Tragically, Stanley passed away after a bicycling accident in Colorado shortly after the cabin roof was finished.

## Split Rail Fence

Once the cabin roof was finished there was time to install a sturdy split-rail fence. Board members Dale Marsden and Wes Licht put up the fence which gave a nice finish to the back edge of the lot.



## Recent Deaths (cont.)

Sadie Powers, age 86

McFARLAND - Sadie passed away on Wednesday, Jan. 13, 2010, at Skaalen Nursing Home in Stoughton. Sadie was born Nov. 4, 1923, the daughter of Carl and Eda (Severson) Grabow. Sadie grew up in Cottage Grove on the Severson family farm. In order to attend high school Sadie had to live with relatives in Madison. She graduated in 1946 with a bachelor's degree in education at the University of Wisconsin-Madison. After graduation from college she taught high school in Barneveld and Blue River, where she met and married Willis H. Powers. They moved to Madison and then McFarland to raise their daughters. Sadie returned to the University of Wisconsin

to continue her education earning a master's in library science. Sadie was the McFarland Elementary School librarian for a number of years until her retirement. Sadie was a member of the American Legion Auxiliary, Madison and McFarland chapters, at one time serving as president. Sadie was an active member of the McFarland Historical Society where she spent many Sunday afternoons. Sadie was a faithful, longtime member of the McFarland Lutheran Church. She was a member of the Sarah Circle, served on the church council, taught Sunday School and established the church library. Sadie loved to travel. She visited Mexico, Europe, Norway and Alaska. In 2002, she took an especially meaningful trip to the Holy Land with her church family.



## 2009 Donations to the Society

### **Member Cash Donors (not in order)**

Maurita Reisenger	Jean Freese	Bill and Sarah Ninedorf	Carolyn Clow	Dick & Susan Kosmo
Harvey & Pat Hermsdorf	James & Diana Batler	Laradene Reinke	Eleanor Seekins	Delyla Smith
Thelma Allen	Rick Behnke Family	Erhard Opsahl	Judy Livings	Ray VanKylen
Stanley & Ginny Dodson	Sheryl Renslo	Tura Graber	Dick & Sheila Plotkin	Ed Donegan
Rosemary Otte	Ann & Jim Brink	Rod & Cindy Clark	Gail Schwab	Cleo Keigard
Jim & Linda Ellestad	Barbara Balseiro	Donna Edwards	Don & Michel Buhalog	Bonnie Thomas
Bobby Faulkner	John Wendling	Virginia Kominiak	Shawn & Katie Miller	Chuck & Carrie Dillon
Ven & Jane Cypher	Harold & Helen Jennings	Tim Mitchell	Dolores Mitchell	Pat & Will Rossman
Charles Larson	Mrs Roy Simmons	Lyle & Elsie Larson	Roald Lokken	Frank Roub
Edward Anderson	Gini & Stan Nichols	Barb and Mark Jung	Nick Linden & Celia Lamper	Linda Blake
Evan Richards	Ken Olson	Marion Trachte	Ernie Thieding	Dick Kohl
George Fitzgerald	Steve & Kristin Hildebrandt	Jo Thomley	Diane Strelow	Mary Rodriguez
Pam & Gary Crapp	Sandra Sherry	Jerry Adrian	Larry Chatman	Phylis Bengry
Elizabeth McConnell	Ann Stajich	Glen & Bonnie Schaefer	Bob Edwards	Randy Raasch
Pat Kennedy	Cress Funeral Home	Ken Alsmo	The McFarland Animal Hospital	
ExxonMobil Oil Corporation Foundation (matching grant)				

We are sorry if we missed anyone.

We would also like to thank all those who made donations of baked goods for our Memorial Day Bake Sale. We could not keep the museum in operation without these funds. A special thanks to those who made donations of historical artifacts for the museum. We will make every effort to put these items on display.

### **Membership**

Please fill out your membership card and join us in preserving our village's history. Memberships pay our bills and enable our volunteers to maintain and display our history. All the work we do is volunteer and we have no paid staff of any kind. The McFarland Historical Society is thankful to its board and its members for maintaining the society in good financial condition.

***Many thanks to McFarland Printers for its donation toward printing our newsletter!***

**Boxholder  
McFarland, WI 53558**

Nonprofit Org.  
U.S. Postage  
Paid  
McFarland, WI  
Permit No. 8

McFarland Historical Society  
P.O. Box 94  
McFarland, Wis 53558